



ULTIMATE
SOLUTIONS

Together We're Better!

Private Label
Branding
Available!

YOUR FAMILY FOR A COMPLETE RANGE OF CLEANING SOLUTIONS



Sandia
PRODUCTS

Your Ultimate Choice in
Profitable Cleaning Performance!



**CALL US TODAY IF YOU HAVE ANY QUESTIONS,
OR WOULD LIKE TO PLACE AN ORDER!**

Ultimate Solutions Corporate Office
15571 Container Lane, Huntington Beach, CA 92649
Phone: 800-983-5834 | Fax: 714-901-8404

www.sandiaplastics.com
www.mercuryfloormachines.com



We Manufacture
with Pride in the
U.S.A.

ULTIMATE SOLUTIONS CATALOG
Sandia Products and Mercury Floor Machines Product Lines

ABOUT US

We are an international organization that designs, develops and manufactures innovative cleaning products to liberate the cleaning world at work! Ultimate Solutions includes our family of brands: Sandia Products and Mercury Floor Machines. One of our core values is to "stop spreading dirt and start spreading joy"! Our revolutionary ideas will change the way you think about cleaning. We really care about the cleaning business because we really care about people. Using our knowledge and expertise, we want to change perspectives by making life easier and more fun for those who clean the world.

ABOUT OUR PRIVATE LABEL PROGRAM

Build your Brand Recognition, Reputation and Business Skills



This logo represents machines that may be Private Labeled!

Our entire Sandia Products and Mercury Floor Machines lines are available for private branding. We partner with you to develop your machine labels or mold-in-graphic as well as the custom color scheme of your machines. Custom machine operating manuals and sell sheets are also provided. Our Private Label Program has been developed to allow our clients to WOW their buyers with the highest quality machines representing their own brand!

CLIENT WARRANTY INFORMATION

All equipment is inspected and tested before shipping from the manufacturer. All parts are warranted to be new and free from defects in workmanship and material, under normal use to the original retail purchaser. This warranty limits manufacturer's liability for defects in workmanship or materials for replacement of defective parts only. The manufacturer accepts no liability for incidental or consequential damages arisen from the use of any equipment, defective or not. This warranty is in lieu of all expressed or implied warranties and is extended only to the original retail purchaser. Manufacturer sales and service representatives are not authorized to waive or alter the terms of this warranty, or to increase the obligations of the manufacturer under the warranty. Parts replaced or repaired under this warranty are warranted for the remainder of the original warranty period.

Labor is only provided by authorized service centers. If an authorized service center is not near you, it is the purchaser's responsibility to take their machine to an authorized service center. International clients are responsible for all shipping needed for complete warranty. Freight charges and travel charges are not covered by the manufacturer.

The manufacturer covers up to one (1) year (365 days) of service labor at the manufacturer's calculated hourly labor rate/repair time when performed by a manufacturer-authorized service provider. Ultimately, labor reimbursement costs are at the discretion of the manufacturer. At no time is the manufacturer responsible for travel time to complete on-call repairs. After one (1) year, the original retail purchaser is responsible for all labor costs with no manufacturer reimbursement.

The original purchaser must contact the manufacturer to follow correct RMA/warranty procedures. They must include a copy of the RMA Sheet enclosed in the box with the returned item. No returns shall be authorized unless the proper RMA procedures are followed. It is the responsibility of the distributor to repair the client's equipment as soon as possible.

The manufacturer charges a 25% restocking fee for any items that are being returned to stock. Items must be new, unused, free of damage and are only good for up to 30 days. After 30 days, the manufacturer does not accept the return of any items for a store credit.

Authorized warranty replacement parts need to come directly from the manufacturer. Any use of any other parts will void warranty. The manufacturer does not reimburse for parts used by client that were not supplied directly for the machine under warranty.

The client must contact the manufacturer prior to working on or changing out of any parts, etc. The manufacturer must issue an RMA Sheet containing approved labor time and replacement parts. Do not send parts or equipment back to the manufacturer without an RMA Number and approval. No labor will be paid for, nor parts cost paid for or reimbursed, that have not previously been approved by the manufacturer. All warranty work must be approved and authorized to qualify, and appropriate warranty procedures must be followed.

The warranty starts on the purchase date by the original purchaser from an authorized distributor, subject to proof of purchase. The Machine Registration Form must be completed online at the time of purchase. If proof of purchase cannot be identified, the warranty start date is ninety (90) days after the date of sale to an authorized distributor.

Register your machine online!

Sandia Products: www.sandiaplastics.com/registration.aspx
Mercury Floor Machines: www.mercuryfloormachines.com/registration.aspx

TABLE OF CONTENTS

Sandia Products

Sniper 12-Gallon Carpet Extractors	3
OPTIMIZER 12-Gallon Portable Carpet Extractors	4
Sniper 12-Gallon Carpet Extractor Upgrades.....	5
Sniper 12-Gallon Carpet Extractor Accessories	5
Sniper 12-Gallon Hard Surface Extractor	6
Sniper 12-Gallon Hard Surface Extractor Accessories.....	6
Sniper 24-Gallon Flood Pumper.....	7
Sniper 24-Gallon Flood Pumper Accessories and Replacement Parts	7
Sniper 6-Gallon Carpet Extractors.....	8
Sniper 6-Gallon Carpet Extractor Accessories.....	9
Sniper Carpet Extractor Replacement Parts	9
Indy Automotive Line	13
Spot Extractor Kits.....	14
Spot Extractor Accessories.....	15
Spot Extractor Replacement Parts	16
Raven 10-Quart Backpack Vacuums	17
Raven 6-Quart Backpack Vacuums	18
Hipster 6-Quart Hip Vacs	19
Backpack and Hip Vacuum Replacement Bags	20
Backpack and Hip Vacuum Accessories	20
Backpack and Hip Vacuum Sidewinder Tools	22
Backpack and Hip Vacuum Replacement Parts	22
Gen-Air Air Mover.....	25
FORCE 14 Upright Vacuum	26
FORCE 14 Upright Vacuum Filters and Bags	26

Mercury Floor Machines

Floor Machines	27
Burnishers	30
Air Movers	31
ACE Backpack Vacuum	32
Wet / Dry Vacuum	32

SNIPER 12-GALLON CARPET EXTRACTORS



Warranty: Lifetime warranty on body, 2-years on vacuum motors, 1-year on 200, 300, 500, 800 PSI pumps, 2-years on 100 PSI pump, 1-year on all electrical components, 90-days on tools and accessories.

- Powerful vacuum motors offer up to 205" water lift for efficient solution recovery that results in better extraction and faster carpet drying.
- High performance motors stay cool with an innovative air intake design that uses the vacuum's own cooling fans to pull cool, outside air over the motors, reducing motor temperature and preventing overheating.
- Heated units include an in-line heater that lets you extract with 200 degree Fahrenheit solution!
- 12-gallon solution and recovery tanks allow for quick and easy fill and dump disposal, reducing downtime.
- Waist-high controls prevent bending and stooping to operate the machine. The controls are recessed in the machine and stay protected during use, in transit or in storage.
- 10" non-skid, non-marking wheels make stair climbing easy and do not scuff floors.
- Roto-molded polyethylene tanks withstand the toughest working environments and resist dents, chips and cracks.
- Includes 25-foot long safety power cord(s).
- Optional crush-resistant, 25-foot vacuum and solution hoses, "S" shaped stainless steel wand with dual spray jets and 4" stainless steel upholstery tool available. Order separately.

APPLICATIONS

The best tool designed for deep cleaning carpet. Designed to be portable and to be used where a Truck Mount Machine cannot reach.

SPECIFICATIONS

Solution Pump: 100, 200, 300, 500 or 800 PSI

In-Line Heated Units: 2000 Watt, up to 200° F

Vac Motor: Dual 2-Stage or Dual 3-Stage Available

Water Lift: Up to 205"

Available in Single or Dual Stack Units!
Ask about 230 Volt Models.



Manufactured with
Pride in the U.S.A.



MODELS

Model	Pump	Vac Motors	In Line Heat	Cord	Shipping Weight
80-2100	100 PSI	Dual 2-Stage	No	1	110 lbs.
80-2100-H	100 PSI	Dual 2-Stage	Yes	2	112 lbs.
80-3100	100 PSI	Dual 3-Stage	No	2	112 lbs.
80-3100-H	100 PSI	Dual 3-Stage	Yes	2	114 lbs.
80-2200	200 PSI	Dual 2-Stage	No	1	112 lbs.
80-2200-H	200 PSI	Dual 2-Stage	Yes	2	114 lbs.
80-3200	200 PSI	Dual 3-Stage	No	2	114 lbs.
80-3200-H	200 PSI	Dual 3-Stage	Yes	2	116 lbs.
80-2300	300 PSI	Dual 2-Stage	No	1	114 lbs.

Model	Pump	Vac Motors	In Line Heat	Cord	Shipping Weight
80-2300-H	300 PSI	Dual 2-Stage	Yes	2	116 lbs.
80-3300	300 PSI	Dual 3-Stage	No	2	129 lbs.
80-3300-H	300 PSI	Dual 3-Stage	Yes	2	131 lbs.
80-2500	500 PSI	Dual 2-Stage	No	1	131 lbs.
80-2500-H	500 PSI	Dual 2-Stage	Yes	2	133 lbs.
80-3500	500 PSI	Dual 3-Stage	No	2	131 lbs.
80-3500-H	500 PSI	Dual 3-Stage	Yes	2	133 lbs.
80-2800	800 PSI	Dual 2-Stage	No	1	134 lbs.

* Dual Cord Units Require (2) 20 Amp Breakers

OPTIMIZER 12-GALLON PORTABLE CARPET EXTRACTORS



TIP: We have designed all of our extractors so that the working components of the machine may be easily accessed. There is plenty of room in the base of our machines for easy maintenance.

Warranty: Lifetime warranty on body, 2-years on vacuum motors, 2-years on 100 PSI pump, 1-year on 200 and 300 PSI pumps and all electrical components, 90-days on tools and accessories.

- Powerful dual, 2-stage 6.6" vacuum motors require less amp draw and provide optimal 215" water lift for efficient solution recovery that results in better extraction and faster carpet drying.
- Thermal protected, sealed motors with a patented "Eternity Brush System" provide three times longer motor brush life.
- Advanced fan and chamber motor design allow for a lower amp draw.
- High performance motors stay cool with an innovative air intake design that uses the vacuum's own cooling fans to pull cool, outside air over the motors, reducing motor temperature and preventing overheating.
- Heated units include an in-line heater that lets you extract with 200 degree Fahrenheit solution!
- 12-gallon solution and recovery tanks allow for quick and easy fill and dump disposal, reducing downtime.
- Waist-high controls prevent bending and stooping to operate the machine. The controls are recessed in the machine and stay protected during use, in transit or in storage.
- 10" non-skid, non-marking wheels make stair climbing easy and do not scuff floors.
- Roto-molded polyethylene body withstands the toughest working environments and resist dents, chips and cracks. Looks professional longer.
- Includes (2) 25-foot, 12/3-gauge safety power cords.
- Optional crush-resistant, 25-foot vacuum and solution hoses, "S" shaped stainless steel wand with dual spray jets and 4" stainless steel upholstery tool available. Order separately.

SPECIFICATIONS

Solution Pump: 100, 200 or 300 PSI

In-Line Heated Units: 2000 Watt, up to 200° F

Vac Motor: Dual 6.6", 2-Stage Motors (25.2 Amps)

Water Lift: Up to 215"

CFM: 133

Ask about 230 Volt Models.

APPLICATIONS

The best tool designed for deep cleaning carpet. The OPTIMIZER 12-Gallon Portable Extractor gives you the power of a Truck Mount in a portable extractor. It's class leading 6.6" vac motors are 42% more efficient, allow for more sealed suction and provide 5" more water lift than traditional 5.7" 3 stage vacuum motor. Experience more bang for your buck and the convenience of Truck Mount power in a portable extractor.

MODELS

Model	Pump	Vac Motors	In Line Heat	Cord
66-2100	100 PSI	Dual 2-Stage	No	2
66-2100-H	100 PSI	Dual 2-Stage	Yes	2
66-2200	200 PSI	Dual 2-Stage	No	2
66-2200-H	200 PSI	Dual 2-Stage	Yes	2
66-2300	300 PSI	Dual 2-Stage	No	2
66-2300-H	300 PSI	Dual 2-Stage	Yes	2

* Dual Cord Units Require (2) 20 Amp Breakers



Manufactured with
Pride in the U.S.A.



SNIPER 12-GALLON CARPET EXTRACTOR **UPGRADES**

Auto Fill and Auto Dump features available upon request for an additional charge. Factory installed options available on new extractors only and must be noted on the purchase order. Auto Dump cannot be added to units built in Dual Stack (In Parallel).

80-1000

Auto Fill / Auto Dump Upgrade

80-1001

Auto Dump Upgrade Only

80-1002

Auto Fill Upgrade Only

80-1500

Dual Stack Upgrade

SNIPER 12-GALLON CARPET EXTRACTOR **ACCESSORIES**



10-0501

4 in. Stainless Steel Upholstery Tool, Required for Machines with Heat



10-0512

Stainless Steel Crevice Tool



10-0861

12 in. Stainless Steel Dual Jet S-Bend Wand



10-0863

12 in. Titanium Dual Jet Wand with Teflon Glides



80-0500

25 ft. Vacuum and Solution Hoses and Stainless Steel Dual Jet Wand Kit



80-0502

25 ft. Solution Hose Assembly with 1/4 in. Female and Male Quick Disconnects



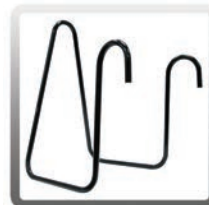
80-0503

25 ft. Vacuum Hose with Cuffs Assembly



80-0510

Black Mesh Utility Bag (24 x 36)



HOSE HANGER

Hose Hanger for Extractors

TIP: Extractors dispense water, either hot or cold, into a carpet at various rates called PSI (Pounds per Square Inch). The higher the PSI, the more water output into carpet. The solution hose dispenses the water and the vacuum hose sucks the water out of the carpet. Ultimate Solutions offers a variety of PSI and vacuum pump choices to meet the needs of your specific job.



NEW UPGRADE!

CORD HOOK UPGRADE

Add our Dual Cord Hook Upgrade to your 6- and 12-Gallon Extractors

SNIPER 12-GALLON HARD SURFACE EXTRACTOR



Manufactured with
Pride in the U.S.A.



CREATE
YOUR OWN
BRAND

Warranty: Lifetime warranty on body, 2-years on vacuum motors, 1-year on pump and all electrical components, 90-days on all accessories.

- The one 2-stage and one 3-stage vacuum motors allow for 170" of water lift for efficient solution recovery that results in better extraction and faster carpet drying.
- High performance motors stay cool with an innovative air intake design that uses the vacuum's own cooling fans to pull cool, outside air over the motors, reducing motor temperature and preventing overheating. This allows for performance with less maintenance.
- Powerful 1200 PSI adjustable pump adjusts down to 400 PSI, providing the perfect pressure for cleaning everything from tile to concrete.
- 12-gallon solution and recovery tanks allow for quick and easy fill and dump disposal, reducing downtime. Auto fill and auto dump capability allows for constant working pressure from start to finish.
- Waist-high controls prevent bending and stooping to operate the machine. Adjustments can be made standing comfortably. The controls are recessed in the machine and stay protected during use, in transit or in storage.
- 10" non-skid, non-marking wheels make stair climbing easy and do not scuff floors.
- Roto-molded polyethylene tanks withstand the toughest working environments and resist dents, chips and cracks. They have a professional look with ultimate durability.
- Includes (2) 25-foot, 12/3-gauge safety power cords.
- Includes clear view in-line filter, 50-foot auto fill hose, 50-foot auto dump hose, 25-foot vacuum hose, 25-foot solution hose, 4-foot vacuum hose, 13" self priming hose and (2) 25-foot safety power cords. Wand and hard surface tools sold separately.
- An optional 7" or 12" turbo cleaning tool is available for hard surface cleaning and is built with stainless steel components. Order separately.

APPLICATIONS

A powerful and versatile portable extractor that is specifically designed for high-pressure cleaning of hard surfaces. With an adjustable 400 to 1200 PSI pump, you can clean tile, concrete and everything in between!

Ask about 230 Volt Models.

SPECIFICATIONS

Model No: 80-5000

Capacity: 12-Gallon Solution and Recovery Tanks

Vac Motors: (1) 2-Stage and (1) 3-Stage Lamb Ametek (Dual Motor)

Solution Pump: 1200 PSI (adjusts down to 400 PSI)

Water Lift: 170"

Volts: 110 / 120

Amp Draw: 19 / 16

CFM: 99

Shipping Weight: 150 lbs.

* Dual Cord Unit Requires (2) 20 Amp Breakers

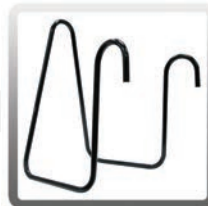
ACCESSORIES



10-0859
12 in. Hard Surface
Turbo Brush Tool



10-0874
7 in. Hard Surface
Turbo Brush Tool



HOSE HANGER
Hose Hanger for
Extractors



**CORD HOOK
UPGRADE**
for Extractors

SNIPER 24-GALLON FLOOD PUMPER – *ALL NEW DESIGN!*



Warranty: Lifetime warranty on body, 2-years on vacuum motor, 1-year on pump and all electrical components, 90-days on tools and accessories.

- A powerful 2-stage vacuum motor and 40 GPM flow-through pump allows all waste water to be recovered at 40 gallons per minute.
- The auto pump-out feature works continuously, automatically dumping water so tanks don't have to be emptied when full. 24-gallon capacity.
- The high performance motor stays cool with an innovative air intake design that uses the vacuum's own cooling fans to pull cool, outside air over the motor, reducing motor temperature and preventing overheating.
- Waist-high controls prevent bending and stooping to operate the machine. The controls are recessed in the machine and stay protected during use, in transit or in storage.
- 10" non-skid, non-marking wheels make stair climbing easy and do not scuff floors.
- Roto-molded polyethylene body withstands the toughest working environments and resist dents, chips and cracks. Looks professional longer.
- Includes (1) 25-foot, 12/3-gauge safety power cord.
- Includes (1) 25-foot 1-1/2" vacuum hose and (1) 25-foot 1-1/2" dump hose.

APPLICATIONS

Designed specifically for the purpose of vacuuming large amounts of water. Ideal for flood clean-up. It pumps out liquid at a rate of 40 gallons per minute.

Ask about 230 Volt Models.

ACCESSORIES AND REPLACEMENT PARTS

SPECIFICATIONS

Model No: 80-6001

Motor: (1) 2-Stage

Pump: (1) 3/4 HP totally enclosed, fan cooled, 1725 RPM Waste Dump Pump

Pump-Out Rate: 40.0 GPM

Water Lift / CFM: 110" / 120 CFM

Air Watts / Amps: 520 AW / 14.3 Amps

Overflow Protection: Automatic On/Off

Weight: 106 lbs.



Manufactured with
Pride in the U.S.A.



10-0029
56 in. 2-Piece, 2-Bend
Aluminum Wand with
3-Piece Head Kit



10-0170
14 in. Squeegee Floor
Tool



10-0185-15-S
15 in. Sidewinder
Squeegee Floor Tool



10-0488
14 in. White Blade
Squeegee Floor Tool



10-0472
14 in. Easy Glide Carpet
and Floor Tool



10-0800
Flood Pumper Pump



10-0825-COM
Flood Pumper Motor
with Gasket



HOSE HANGER
Hose Hanger for
Extractors



**CORD HOOK
UPGRADE**
for Extractors

SNIPER 6-GALLON CARPET EXTRACTORS



Warranty: Lifetime warranty on body, 2-years on vacuum motor(s), 1-year on 200 and 300 PSI pumps, 2-years on 100 PSI pump, 1-year on all electrical components, 90-days on tools and accessories.

- Powerful vacuum motors offer up to 205" water lift for efficient solution recovery that results in better extraction and faster carpet drying.
- High performance motors stay cool with an innovative air intake design that uses the vacuum's own cooling fans to pull cool, outside air over the motors, reducing motor temperature and preventing overheating.
- Heated units include an in-line heater that lets you extract with 200 degree Fahrenheit solution!
- 6-gallon solution and recovery tanks allow for quick and easy fill and dump disposal, reducing downtime.
- Waist-high controls prevent bending and stooping to operate the machine. The controls are recessed in the machine and stay protected during use, in transit or in storage.
- 10" non-skid, non-marking wheels make stair climbing easy and do not scuff floors.
- Roto-molded polyethylene tanks withstand the toughest working environments and resist dents, chips and cracks.
- Includes 25-foot long safety power cord(s).
- Optional 15-foot vacuum and solution hoses, single jet carpet wand and 4" stainless steel upholstery tool available. Order separately.

APPLICATIONS

The best tool designed for deep cleaning carpet. Designed to be portable and to be used where a Truck Mount Machine cannot reach.

SPECIFICATIONS

Solution Pump: 100, 200, or 300 PSI

In-Line Heated Units: 2000 Watt, up to 200° F (Model 86-R3100-H has a 600 Watt Heater)

Vac Motor: Single 3-Stage, Dual 2-Stage or 3-Stage Vacuum Motors Available

Vac Power: Up to 205" Water Lift

Ask about 230 Volt Models.



Manufactured with
Pride in the U.S.A.



NEW!

CORD HOOK UPGRADE

Add our Dual Cord Hook Upgrade to your 6- and 12-Gallon Extractors



MODELS

Model	Pump	Vac Motors	In Line Heat	Cord	Shipping Weight
86-R3100	100 PSI	Single 3-Stage	No	1	72 lbs.
86-R3100-H	100 PSI	Single 3-Stage	Yes	1	82 lbs.
86-2100	100 PSI	Dual 2-Stage	No	1	78 lbs.
86-2100-H	100 PSI	Dual 2-Stage	Yes	2	88 lbs.
86-3100	100 PSI	Dual 3-Stage	No	2	82 lbs.
86-3100-H	100 PSI	Dual 3-Stage	Yes	2	92 lbs.
86-2200	200 PSI	Dual 2-Stage	No	1	87 lbs.

Model	Pump	Vac Motors	In Line Heat	Cord	Shipping Weight
86-2200-H	200 PSI	Dual 2-Stage	Yes	2	97 lbs.
86-3200	200 PSI	Dual 3-Stage	No	2	93 lbs.
86-3200-H	200 PSI	Dual 3-Stage	Yes	2	103 lbs.
86-2300	300 PSI	Dual 2-Stage	No	1	93 lbs.
86-2300-H	300 PSI	Dual 2-Stage	Yes	2	103 lbs.
86-3300	300 PSI	Dual 3-Stage	No	2	95 lbs.
86-3300-H	300 PSI	Dual 3-Stage	Yes	2	105 lbs.

* Dual Cord Units Require (2) 20 Amp Breakers

SNIPER 6-GALLON CARPET EXTRACTOR ACCESSORIES



10-0501
4 in. Stainless Steel
Upholstery Tool, Required
for Machines with Heat



10-0502
Jet for 4 in. Stainless Steel
Upholstery Tool



10-0504
Valve for 4 in. Stainless
Steel Upholstery Tool



10-0512
Stainless Steel Crevice
Tool



50-1008-A
Complete 15 ft. Vacuum
Hose Assembly (1-1/4 in.)



80-0510
Black Mesh Utility Bag
(24 x 36)



80-8007-A
15 ft. Solution Hose
Assembly with
1/4 in. Female and Male
Quick Disconnects



80-8008
12 in. Stainless Steel
Single Bend 1-Jet Wand



80-8009-A
12 in. Stainless Steel Single
Bend, 1-Jet Wand with 15
ft. Vacuum and Solution
Hoses



80-8010
4 in. Stainless Steel
Upholstery Tool with 15
ft. Vacuum and Solution
Hoses



HOSE HANGER
Hose Hanger for
Extractors



CORD HOOK UPGRADE
for Extractors

SNIPER CARPET EXTRACTOR REPLACEMENT PARTS



10-0803
On/Off Switch for
Extractor



10-0804-COM
6 in. Hatch Cover for
Extractor with T-Handle
and Gasket



10-0805
Dump Valve



10-0807
10 in. Wheel for Extractor

SNIPER CARPET EXTRACTOR REPLACEMENT PARTS CONTINUED



10-0808
Caster for Extractor



10-0810-COM
3-Stage Extractor Motor
with Gasket, 120 V



10-0811-66-COM
2-Stage 6.6" Extractor
Motor, 120 V



10-0811-COM
2-Stage Extractor Motor
with Gasket, 120 V



10-0812
100 PSI Pump



10-0814
Sensor for Heater



10-0822
Intake/Exhaust Grate



10-0836
19 in. Axle for Extractor

10-0820
End Cap for Axle



10-0845
1/4 in. Strainer



10-0860
25 ft. Extension Cord for
Extractors



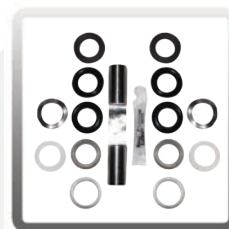
10-0868
1/4 in. Female Quick
Disconnect



10-0869
200 PSI Pump



10-0869-REG
200 PSI Pump Regulator



10-0869-RA
200 PSI Pump Rebuild
Kit A Plunger and Seals



10-0869-RB
200 PSI Pump Rebuild
Kit B Valve and Seals



10-0869-RC
200 PSI Pump Rebuild
Kit C Bearing



10-0870
1/4 in. Male Quick
Disconnect



10-0910-2-1
2000 Watt Heater for
100 PSI Extractor



10-0910-2-2
2000 Watt Heater for
200 PSI Extractor



10-0910-2-3
2000 Watt Heater for
300 PSI Extractor

SNIPER CARPET EXTRACTOR REPLACEMENT PARTS CONTINUED



10-0910-2-5
2000 Watt Heater for
500 PSI Extractor



10-0920
Dual Rod Heat Exchanger
Tube for Extractor



10-1030-S2
2-Stage Motor Gasket



10-1030-S3
3-Stage Motor Gasket



10-1500-A
1000 Watt Heater
Element



10-1500-B
600 Watt Heater Element



80-0003-C
28" Black/Gray Hose
Assembly with Cuffs and
Steel-Type Inserts



80-0007
#1 Tip for Dual Jet
Extractor Wand



80-0007-A
#1 Tip for a Single Jet
Extractor Wand



80-0007-B
#2 Tip for a Single Jet
Extractor Wand



80-0007-D
#3 Tip for Single and
Dual Jet Extractor Wands



80-0012
Shut-Off Assembly



80-0016
500 PSI Pump



80-0016-RA
500 PSI Pump Rebuild
Kit A Plunger and Seals



80-0016-RB
500 PSI Pump Rebuild
Kit B Valve and Seals



80-0016-RC
500 PSI Pump Rebuild
Kit C Bearing



80-0016-REG
500 PSI Pump Regulator



80-0059
500 PSI Extractor Gauge



80-0059-2
200 PSI Extractor Gauge



80-0059-3
300 PSI Extractor Gauge

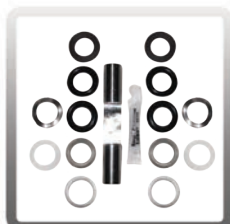
SNIPER CARPET EXTRACTOR REPLACEMENT PARTS CONTINUED



80-0059-4
1200 PSI Extractor Gauge



80-0080
300 PSI Pump for
Extractor



80-0080-RA
300 PSI Pump Rebuild
Kit A Plunger and Seals



80-0080-RB
300 PSI Pump Rebuild
Kit B Valve and Seals



80-0080-RC
300 PSI Pump Rebuild
Kit C Bearing



80-0080-REG
300 PSI Pump Regulator



80-0101-M
1/4 in. Male Brass Check
Valve



80-0112
1200 PSI Pump Kit for
1200 PSI Extractor Only



80-0112-RA
1200 PSI Pump Rebuild
Kit A Plunger and Seals



80-0112-RB
1200 PSI Pump Rebuild
Kit B Valve and Seals



80-0112-RC
1200 PSI Pump Rebuild
Kit C Bearing



80-0112-UN
1200 PSI Unloader Valve
Regulator



80-0505
Valve for Single and Dual
Jet Extractor Wands



80-0505-A
Valve Repair Kit for Valve
on Single and Dual Jet
Wands



80-0800
800 PSI Pump



T-A001-1
Cooling Ducting



TIP: We custom build machines for our clients with flexibility in model, motor and pump types. Add the auto-fill or auto-dump feature and build your machine in single or dual stack. Motors may also be built in series or parallel!

INDY AUTOMOTIVE LINE

Warranty: Lifetime warranty on body, 2-years on motor and pump, 1-year on all electrical components, 90-days on tools and accessories.

- Fastest soil pick-up with high CFM airflow.
- A durable pump delivers heated extracting solution into the carpet. The powerful vacuum motors recover the spent solutions and soils.
- Waist-high controls on 6- and 12-Gallon Carpet Extractors prevent bending and stooping to operate the machine. The controls are recessed in the machine and stay protected during use, in transit or in storage.
- These heated units include an in-line heater that lets you extract with 200 degree Fahrenheit solution!
- The 3-Gallon Spot Extractor includes a black carrying-handle that slides out for easy machine transport.
- Non-skid, non-marking 10-inch wheels on 6- and 12-Gallon Extractors make stair climbing easy and do not scuff floors.
- The 3-Gallon Spot Extractor includes double ball-bearing urethane wheels for easy transport.
- All units include (1) 25-foot, 12/3-gauge safety power cord. *Add our NEW Cord Hook Upgrade!

APPLICATIONS

Designed specifically for detailing automobiles.

[Ask about 230 Volt Models.](#)



Manufactured with
Pride in the U.S.A.



12-GALLON EXTRACTOR

Model No: 80-4000-H

Capacity: 12-Gallon

Pump: 100 PSI

Vac Motor: Single 3-Stage, 1258 Watt / 99 CFM

Voltage: 115 V

Lift: 117"

In-Line Heater: 1200 Watt

Hoses: 25-Foot Vacuum /Solution Hoses

Upholstery Tool: 4" Stainless Steel

Weight: 110 lbs.

Dimensions: 27"L x 20" W x 38" H



6-GALLON EXTRACTOR

Model No: 86-4000-H

Capacity: 6-Gallon

Pump: 100 PSI

Vac Motor: Single 3-Stage, 1258 Watt / 99 CFM

Voltage: 115 V

Lift: 117"

In-Line Heater: 1200 Watt

Hoses: 15-Foot Vacuum /Solution Hoses

Upholstery Tool: 4" Stainless Steel

Weight: 82 lbs.

Dimensions: 26"L x 17" W x 35" H



3-GALLON SPOT EXTRACTOR

Model No: 50-7000

Capacity: 3-Gallon

Pump: 55 PSI
(also available with 100 PSI pump)

Vac Motor: Single 2-Stage, 804 Watt / 100 CFM

Voltage: 115 V

Lift: 76"

In-Line Heater: 600 Watt

Hoses: 15-Foot Vacuum /Solution Hoses

Upholstery Tool: 4" Stainless Steel

Weight: 42 lbs.

Dimensions: 25"L x 11" W x 29" H

SPOT EXTRACTOR KITS

Warranty: Lifetime on body, 2-years on motor and pump, 1-year on all electrical components, 90-days on tools and accessories.

- The Spot Extractor offers fast, efficient spot cleaning of carpets, rugs and upholstery with 76" lift.
- Lightweight and great for small upholstery and spot cleaning jobs.
- A durable 55 PSI pump delivers extracting solution into the carpet. **100 and 150 PSI available!**
- The 1-stage Ametek 804 Watt / 100 CFM vacuum motor efficiently recovers spent solution and soils which allows for faster carpet drying.
- The 3-Gallon Spot Extractor with heat, heats extracting solution up to 200 degrees Fahrenheit with a 600 Watt in-line heater. The steel heater chassis is mounted in its own roto-molded tank and frame.
- Roto-molded polyethylene body withstands the toughest working environments and resists dents, chips and cracks.
- The 2-Gallon Spot Extractor includes two easy access ports allow for quick and easy fill and dump disposal, reducing downtime. Molded carrying-handle makes machine transport easy.
- The 3-Gallon Spot Extractor (with and without heat) includes a smooth-glide slide-out, molded carrying handle and double ball-bearing urethane wheels for easy machine transport. The recovery tank separates for clean, easy disposal of spent solution and soils.
- All models include (1) 20-Foot, 16/3-gauge safety power cord.



2-GALLON SPOT EXTRACTOR

50-2000: Spot Extractor with 7 ft. Vacuum and Solution Hoses and 4" Clear View Upholstery Tool

Shipping Weight: 15 lbs.

Dimensions: 20" L x 8" W x 17" H



Choose from a **55 PSI** or **100 PSI** Pump

3-GALLON SPOT EXTRACTOR KITS

50-1000: Spot Extractor with 7 ft. Vacuum and Solution Hoses and 4" Clear View Upholstery Tool

50-1001: Spot Extractor with 7 ft. Vacuum and Solution Hoses and 4" Stainless Steel Upholstery Tool

50-1002: Spot Extractor Machine Only - No Hoses or Tools

50-3000: SUPER Spot Extractor with 7 ft. Vacuum and Solution Hoses and 4" Clear View Upholstery Tool

50-3001: SUPER Spot Extractor with 7 ft. Vacuum and Solution Hoses and 4" Stainless Steel Upholstery Tool

Shipping Weight: 19 lbs.
(Model No. 50-1000)

Dimensions: 21" L x 10" W x 19" H

Kits Available with a **Stainless Steel** or **Clear View** Upholstery Tool

APPLICATIONS

The best tool designed for cleaning small upholstery and spot cleaning jobs. Designed to be portable and to be used where larger Carpet Extractors cannot reach.

Ask about 230 Volt Models.



Manufactured with
Pride in the U.S.A.



CREATE
YOUR
OWN
BRAND

ASK ABOUT OUR NEW SUPER SPOT EXTRACTOR!

The Super Spot Extractor includes a 2-stage super motor, that allows for 30% more water lift than our standard model. Feel the power of the Super Spot Extractor with 98.8" of water lift!



3-GALLON SPOT EXTRACTOR WITH HEAT

50-4000: Spot Extractor with Heat and 1.25" x 15 ft. Vacuum and Solution Hoses with 4" Stainless Steel Upholstery Tool

In-Line Heater: 600 Watt

Shipping Weight: 42 lbs.

Dimensions: 25" L x 11" W x 29" H

SPOT EXTRACTOR ACCESSORIES



10-0401-E

4 in. Clear View Plastic Upholstery Tool with External 7 ft. Hoses for machines **WITHOUT** Heat



10-0401-I

4 in. Clear View Plastic Upholstery Tool with Internal 7 ft. Hoses for machines **WITHOUT** Heat



10-0450

7 ft. Vacuum and Solution Hoses (Internal)



10-0450-A

7 ft. Vacuum and Solution Hoses (External)



10-0455

Stainless Steel Spotter Wand with Blue 3000 PSI Hose and #2 Jet



10-0500-E

4 in. Clear View Plastic Upholstery Tool for External Hoses for Machines **WITHOUT** Heat



10-0500-I

4 in. Clear View Plastic Upholstery Tool for Internal Hoses for Machines **WITHOUT** Heat



10-0501

4 in. Stainless Steel Upholstery Tool for use with External Hoses for Machines with or without Heat



10-0503

4 in. Stainless Steel Upholstery Tool and 7 ft. External Vacuum and Solution Hoses



10-0508

4 in. Stainless Steel Upholstery Tool with Clear View Head for External Hoses



10-0512

Stainless Steel Crevice Tool for External Hoses (for Indy Line)



80-8010-SP

4 in. Stainless Steel Upholstery Tool with 15 ft. External Vacuum and Solution Hoses



80-8011

15 ft. Vacuum and Solution Hoses with 1-1/4 in. Straight Cuffs, **NO** Upholstery Tool

TIP: We have the ability to vary the strength of the Spotter's heater elements, thus reducing amp draw. This is great for older buildings that require machines that pull under 15 amps.



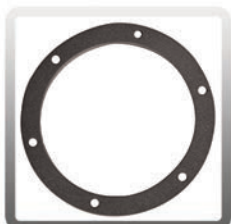
SPOT EXTRACTOR REPLACEMENT PARTS



10-0300
55 PSI Pump for 2-Gallon
and 3-Gallon Spotters



10-0302
5 in. Hatch Cover for
2-Gallon Solution Tank



10-0302-A
5 in. Gasket for Hatch
Cover for 2-Gallon and
3-Gallon Spotters



10-0303
Rollerblade Wheel for
Spotter



10-0304
Spotter Cap and Float
Assembly for 3-Gallon
Spotter

10-0387
Bolt for Spotter Wheel



10-0354-COM
3-Gallon Spotter Motor
with Gasket



10-0366-COM
3-Gallon Super Spotter
Motor with Gasket



10-0447-COM
2-Gallon Spotter Motor
with Gasket



10-0499-A
Tee Jet for 4 in. Clear View
Upholstery Tool



10-0504
Valve for Stainless Steel
Upholstery Tool for Part
Number 10-0501



10-0504-A
Repair Kit for 4 in.
Stainless Steel Upholstery
Tool Valve



10-0507
8 in. Black Hose for 4 in.
Stainless Steel Upholstery
Tool



10-0900
Single Rod Heater
Exchanger Tube for
Spotter



10-0910-SP
600 Watt Heater for
Spotter



10-0814
Sensor for Heater



10-1030
Spotter Motor Gasket for 2-Gallon
and 3-Gallon Spotters



TIP: Easy transport!
Our clients say our
Spotter is like "a
suitcase on wheels."

RAVEN 10-QUART BACKPACK VACUUMS

Warranty: Lifetime warranty on body, 5-years on motor and all electrical components, 90-days on tools and accessories.

- Fastest soil pick-up with high CFM airflow, making the Raven significantly more proficient than traditional uprights.
- Collects the most soils, leaving exhaust air cleaner with a disposable, heavy-duty paper micro-bag mounted inside a washable cloth shakeout bag.
- Lightweight ergonomic design, with a cushioned back-pad that fits the curve of any operator's back. The comfortable shoulder and waist belt design reduces fatigue, making work easier.
- 2 Lever-style latches lock the lid to the body and a static-dissipating vacuum hose securely threads into the backpack's lid, allowing for right- and left-handed vacuuming. The interchangeable lid converts the Raven into a powerful blower.
- Easy-to-reach On/Off power switch, quiet motor and 50-foot long safety power cord.
- 5-piece tool kit included on select models: 56" 2-piece 2-bend aluminum wand, 14" scalloped floor tool, 17" crevice tool, 5" upholstery tool and 3" dust brush.

APPLICATIONS

Designed for vacuuming, carpet, hard floors and upholstery. Worn on the back to allow for easy and quick vacuuming while walking. Ideal for hallways, airplanes and commercial spaces.

[Ask about 230 Volt Models.](#)

TIP: Our backpacks double as blowers!

Model	Type	Includes	Model	Type	Includes
20-1000	Super	Machine Only	20-2003	WHISPER	5-Piece Tool Kit / Power Head Kit
20-1001	Super	5-Piece Tool Kit	20-3000	HEPA	Machine Only
20-1002	Super	Power Head Kit	20-3001	HEPA	5-Piece Tool Kit
20-1003	Super	5-Piece Tool Kit / Power Head Kit	20-3002	HEPA	Power Head Kit
20-2000	WHISPER	Machine Only	20-3003	HEPA	5-Piece Tool Kit / Power Head Kit
20-2001	WHISPER	5-Piece Tool Kit	20-5000	Aviation	Machine Only
20-2002	WHISPER	Power Head Kit	20-5001	Aviation	5-Piece Tool Kit

SUPER RAVEN

Capacity: 10-Quarts
Airflow: 150 CFM
Power: 1340 Watts
Motor: 1.5 HP, 1-Stage
dB: 67
Amps: 11.5
Volts: 115 V
Static/Lift: 95
Weight: 10 lbs.
Height: 23"

WHISPER RAVEN

Capacity: 10-Quarts
Airflow: 120 CFM
Power: 1122 Watts
Motor: 1.5 HP, 2-Stage
dB: 61
Amps: 9.6
Volts: 115 V
Static/Lift: 95
Weight: 11 lbs.
Height: 23"

HEPA RAVEN

Capacity: 10-Quarts
Airflow: 150 CFM
Power: 1340 Watts
Motor: 1.5 HP, 1-Stage
dB: 67
Amps: 11.5
Volts: 115 V
Static/Lift: 95
Weight: 10.5 lbs.
Height: 23"

AVIATION RAVEN

Capacity: 10-Quarts
Airflow: 150 CFM
Power: 1340 Watts
Motor: 1.5 HP, 1-Stage
dB: 67
Hz: 400 Hz
Volts: 115 V
Static/Lift: 95
Weight: 10.5 lbs.
Height: 23"



Manufactured with
Pride in the U.S.A.



RAVEN 6-QUART BACKPACK VACUUMS



Warranty: Lifetime warranty on body, 5-years on motor and all electrical components, 90-days on tools and accessories.

- Fastest soil pick-up with high CFM airflow, making the Raven significantly more proficient than traditional uprights.
- Collects the most soils, leaving exhaust air cleaner with a disposable, heavy-duty paper micro-bag mounted inside a washable cloth shakeout bag.
- Lightweight ergonomic design, with a cushioned back-pad that fits the curve of any operator's back. The comfortable shoulder and waist belt design reduces fatigue, making work easier.
- Twist top lid with static-dissipating vacuum hose and swivel cuff for right- and left-handed vacuuming. The interchangeable lid converts the Raven into a powerful blower.
- Easy-to-reach On/Off power switch, quiet motor and 50-foot long safety power cord.
- 5-piece tool kit included on select models: 56" 2-piece 2-bend aluminum wand, 14" scalloped floor tool, 17" crevice tool, 5" upholstery tool and 3" dust brush.

APPLICATIONS

Designed for vacuuming, carpet, hard floors and upholstery. Worn on the back to allow for easy and quick vacuuming while walking. Ideal for hallways, airplanes and commercial spaces.



Manufactured with
Pride in the U.S.A.



Ask about 230 Volt Models.

Model	Type	Includes
70-1000	Avenger	Machine Only
70-1001	Avenger	5-Piece Tool Kit
70-1002	Avenger	Power Head Kit
70-1003	Avenger	5-Piece Tool Kit / Power Head Kit
70-2000	Super	Machine Only
70-2001	Super	5-Piece Tool Kit
70-2002	Super	Power Head Kit
70-2003	Super	5-Piece Tool Kit / Power Head Kit
70-3000	WHISPER	Machine Only

Model	Type	Includes
70-3001	WHISPER	5-Piece Tool Kit
70-3002	WHISPER	Power Head Kit
70-3003	WHISPER	5-Piece Tool Kit / Power Head Kit
70-4000	HEPA	Machine Only
70-4001	HEPA	5-Piece Tool Kit
70-4002	HEPA	Power Head Kit
70-4003	HEPA	5-Piece Tool Kit / Power Head Kit
70-5000	Aviation	Machine Only
70-5001	Aviation	5-Piece Tool Kit

AVENGER RAVEN

Capacity: 6-Quarts
Airflow: 112 CFM
Power: 802 Watts
Motor: 1.5 HP, 1-Stage
dB: 60
Amps: 6.8
Volts: 115 V
Static/Lift: 85
Weight: 9 lbs.
Height: 23"

SUPER RAVEN

Capacity: 6-Quarts
Airflow: 150 CFM
Power: 1340 Watts
Motor: 1.5 HP, 1-Stage
dB: 67
Amps: 11.5
Volts: 115 V
Static/Lift: 95
Weight: 9 lbs.
Height: 23"

WHISPER RAVEN

Capacity: 6-Quarts
Airflow: 120 CFM
Power: 1122 Watts
Motor: 1.5 HP, 2-Stage
dB: 61
Amps: 9.6
Volts: 115 V
Static/Lift: 91
Weight: 10 lbs.
Height: 23"

HEPA RAVEN

Capacity: 6-Quarts
Airflow: 150 CFM
Power: 1340 Watts
Motor: 1.5 HP, 1-Stage
dB: 67
Amps: 11.5
Volts: 115 V
Static/Lift: 95
Weight: 9.5 lbs.
Height: 23"



AVIATION RAVEN

Capacity: 6-Quarts
Airflow: 150 CFM
Power: 1340 Watts
Motor: 1.5 HP, 1-Stage
dB: 67
Hz: 400 Hz
Volts: 115 V
Static/Lift: 95
Weight: 10 lbs.
Height: 23"

HIPSTER 6-QUART HIP VACS



Manufactured with
Pride in the U.S.A.



Warranty: Lifetime warranty on body, 5-years on motor and all electrical components, 90-days on tools and accessories.

- Collects the most soils, leaving exhaust air cleaner with a disposable, heavy-duty paper micro-bag mounted inside a washable cloth shakeout bag.
- The innovative bag support plate keeps the bag from depleting airflow, allowing for constant power.
- A patented noise suppressing exhaust chamber makes the Hipster the quietest vacuum in its class.
- Lightweight design and four-way belt tensioner ensure maximum adjustability and comfort. The comfortable waist belt design reduces fatigue, making work easier.
- The reversible cap makes adjustment easy for both left- and right-handed use.
- Unbreakable stainless steel latches, impact-proof polyethylene body and a 1.5" industrial hose makes the Hipster durable and long-lasting.
- Includes an easy-to-reach On/Off power switch, quiet motor and 50-foot long safety power cord.
- 5-piece tool kit included on select models: 56" 2-piece 2-bend aluminum wand, 14" scalloped floor tool, 17" crevice tool, 5" upholstery tool and 3" dust brush.

APPLICATIONS

Designed for vacuuming carpet, hard floors and upholstery. Worn on the hip to allow for easy and quick vacuuming while walking. Ideal for hallways, and commercial spaces.

[Ask about 230 Volt Models.](#)

Model	Type	Includes
30-1000	DP	Machine Only
30-1001	DP	5-Piece Tool Kit
30-1002	DP	Power Head Kit
30-1003	DP	5-Piece Tool Kit / Power Head Kit
30-2000	Super	Machine Only
30-2001	Super	5-Piece Tool Kit

Model	Type	Includes
30-2002	Super	Power Head Kit
30-2003	Super	5-Piece Tool Kit / Power Head Kit
30-3000	HEPA	Machine Only
30-3001	HEPA	5-Piece Tool Kit
30-3002	HEPA	Power Head Kit
30-3003	HEPA	5-Piece Tool Kit / Power Head Kit

**TIP: The No. 1
choice of our
female clients
based on comfort!**

DP HIPSTER

Capacity: 6-Quarts
Airflow: 112 CFM
Power: 802 Watts
Motor: 1.5 HP, 1-Stage
dB: 65
Amps: 6.8
Volts: 115 V
Weight: 12 lbs.
Dimensions: 11" H x 8" W

SUPER HIPSTER

Capacity: 6-Quarts
Airflow: 150 CFM
Power: 1340 Watts
Motor: 1.5 HP, 1-Stage
dB: 69
Amps: 11.5
Volts: 115 V
Weight: 12 lbs.
Dimensions: 11" H x 8" W

HEPA HIPSTER

Capacity: 6-Quarts
Airflow: 150 CFM
Power: 1340 Watts
Motor: 1.5 HP, 1-Stage
dB: 69
Amps: 11.5
Volts: 115 V
Weight: 12 lbs.
Dimensions: 11" H x 8" W



HOSES

Choose from
1-1/2" Standard or
1-1/2" Super Flex
Hoses



FOUR WAY BELT

Tensioner ensures
maximum
adjustability and
comfort



**ULTIMATE
SOLUTIONS**
Together We're Better!

Sandia
PRODUCTS

Your Ultimate Choice in
Profitable Cleaning Performance!

www.sandiaplastics.com
www.mercuryfloormachines.com

BACKPACK AND HIP VACUUM REPLACEMENT BAGS



10-0006
10-Quart Vacuum
Micro-Lined Filter Bag
(10 Pack)



10-0006-HEPA
10-Quart Vacuum HEPA
Micro-Lined Filter Bag
(10 Pack)



10-0007-6
6-Quart Vacuum Cloth
Filter Bag with L-Style
Grommet



10-0007-10
10-Quart Vacuum Cloth
Filter Bag with L-Style
Grommet



10-0197
6-Quart Vacuum Micro-
Lined Filter Bag (10 Pack)



10-0197-HEPA
6-Quart Vacuum HEPA
Micro-Lined Filter Bag
(10 Pack)



Cylindrical
design
reduces
airflow as
the bag
bulges
and sags.

TIP: The 10-Quart Backpack Vacuum has a tapered versus cylindrical body. By tapering the body 3/4" per side, it prevents a bulging bag from contacting its sides, allowing airflow around the bag.

TIP: The bag support plate keeps sagging heavy bags from impeding air flow. The bag does not suffocate the motor, allowing you to use 100% of the bag!

BACKPACK AND HIP VACUUM ACCESSORIES



10-0029
56 in. 2-Piece, 2-Bend
Aluminum Wand with
3-Piece Head Kit



10-0031
5 in. Upholstery Tool



10-0032-C
Complete 14 in. Scalloped
Floor Tool with Bumper



10-0033
17 in. Crevice Tool



10-0034
Standard 5-Piece Tool Kit



10-0037
3 in. Round Dust Brush



10-0170
14 in. Squeegee Floor
Tool



10-0163
Power Head Kit, Includes
Wand, Electrical Fittings
and Vacuum Head



10-0173
14 in. Felt Floor Tool



10-0176
1 in. to 4 in. Overhead
Pipe Cleaner Wand
Attachment

BACKPACK AND HIP VACUUM ACCESSORIES CONTINUED



10-0176-A
4 in. to 8 in. Overhead
Pipe Cleaner Wand
Attachment



10-0177
4 in. Car Utility Tool



10-0181
28 in. Crevice Tool



10-0183
14 in. Nylon Brush
Hardwood Floor Tool



10-0220
5 in. Aluminum Dust
Brush



10-0224
59 in. 1-Piece, 2-Bend
Aluminum Wand



10-0340
14 in. Scalloped Felt Floor
Tool



10-0342-A
60 in. Straight Extension
Aluminum Wand



10-0345
11 in. Crevice Tool



10-0021-EXTENSION
Backpack Waist Belt
Extension (Extends up to
12 in.)



10-0430
15 in. Smooth Glide
Carpet Brush



10-0438
14 in. Slotted Horse Hair
Carpet Brush



10-0440
14 in. Quick Clean Paddle
(for Pews and Benches)



10-0441
14 in. Horse Hair
Hardwood Floor Brush



10-0454
36 in. Aluminum Vacuum
Wand Extension



10-0497
Hipster Waist Belt
Extension (Extends up to
12 in.)



10-2300
Turbo Brush Kit, Includes
Telescopic Wand, 1-1/2 in.
to 1-1/4 in. Hose Handle



10-2507
1-1/4 in. Turbo Brush



10-M249
Black Rubber Cable
Connector



BACKPACK AND HIP VACUUM **SIDEWINDER TOOLS**



10-0184
59 in. 2-Piece Sidewinder Wand

10-0184-1
59 in. 1-Piece Sidewinder Wand

10-0184-1-EXT
59 in. 1-Piece Sidewinder Extension
Wand

10-0188
32 in. Sidewinder Half Curve Adapter
Pipe Cleaner Wand



10-0185
18 in. Sidewinder Carpet Tool

10-0185-15
15 in. Sidewinder Carpet Tool

10-0185-8
8 in. Sidewinder Carpet Tool



10-0185-F
18 in. Sidewinder Felt Floor Tool

10-0185-15-F
15 in. Sidewinder Felt Floor Tool

10-0185-FS
18 in. Sidewinder Scalloped Felt Floor
Tool

10-0185-15-FS
15 in. Sidewinder Scalloped Felt Floor
Tool



10-0185-H
18 in. Sidewinder Horsehair Floor Tool

10-0185-15-H
15 in. Sidewinder Horsehair Floor Tool

10-0185-8-H
8 in. Sidewinder Horsehair Dusting
Brush



10-0185-N
18 in. Sidewinder Nylon Floor Tool

10-0185-15-N
15 in. Sidewinder Nylon Floor Tool



10-0185-15-S
18 in. Sidewinder Squeegee Tool

BACKPACK AND HIP VACUUM **REPLACEMENT PARTS**



10-0002-A
Complete Vacuum Lid
for 10-Quart Backpack
(NO Hose)



10-0002-B
Complete Vacuum Lid
with Hose and Cuff for
10-Quart Backpack



10-0002-H-LID
Complete Hipster Lid
with Hose and Cuff



10-0002-6-A
Vacuum Lid for 6-Quart
Backpack



10-0008-B
Complete Dome Filter
with Bag Support

BACKPACK AND HIP VACUUM REPLACEMENT PARTS CONTINUED



10-0012-COM

WHISPER 2-Stage Motor
with Gasket



10-0013-COM

Super 1-Stage Motor with
Gasket



10-0018

Sound Dampening
Band



10-0019

10-Qt. Dual Cell Noise Filter

10-0019-6

6-Qt. Dual Cell Noise Filter



10-0020

Cushioned Back Pad



10-0021

Shoulder and Waist Belt



10-0022

Screw for Shoulder and
Waist Belt



10-0023

Washer for Shoulder
and Waist Belt



10-0024-COM

Complete 4 ft. Vacuum
Hose with Cuff for 10-Quart
(1-1/2 in. Diameter)



10-0024-6-COM

Complete 4 ft. Vacuum
Hose with Cuffs for
6-Quarts (1 Swivel and 1
Straight)



10-0025

On/Off Switch for
Backpacks



10-0026-A

17 in. Complete Pigtail
Cord with Strain Relief
Nut and Electrical
Connectors



10-0028

50 ft. Electrical Cord with
Lit Ends



10-0036

Complete 4 ft. Super Flex
Vacuum Hose with Cuffs
(1-1/2 in. Diameter)



10-0042

Aviation Backpack 400 Hz
Motor Brush Kit (Set of 2)



10-0155

Straight Hose Cuff



10-0055-L

Long Screws for Top of
Hipster Waist Belt



10-0055-S

Short Screws for Bottom
of Hipster Waist Belt



10-0165

Copper Ring 3-Piece
Head Kit



10-0173-A

Replacement Blades for
14 in. Felt Floor Tool



**ULTIMATE
SOLUTIONS**
Together We're Better!

Sandia
PRODUCTS

Your Ultimate Choice in
Profitable Cleaning Performance!

www.sandiaplastics.com
www.mercuryfloormachines.com

BACKPACK AND HIP VACUUM REPLACEMENT PARTS CONTINUED



10-0175-A

Replacement Brushes for
16 in. Carpet Tool with
Adjustable Brush



10-0183-A

14 in. Replacement
Brush for Nylon Floor
Tool



10-0195

Swivel Cuff (1-1/2 in.
Diameter)



10-0199

Vacuum Motor Gasket



10-0217

Washer for Waist Belt for
6-Quart Backpacks and
Hipsters



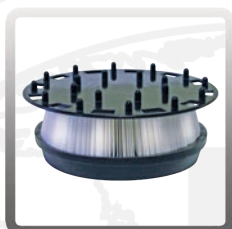
10-0219-H

Complete HEPA Filter
with Bag Support for
6-Quart HEPA Hipster



10-0219-6

Complete HEPA Filter
with Bag Support for
6-Quart HEPA Backpack



10-0219-10-N

Complete HEPA Filter
with Bag Support for
10-Quart HEPA Backpack



10-0223-B

3-Piece Head Kit for
Wand



10-0340-A

14 in. Felt Replacement
Blades for 14 in.
Scalloped Felt Floor Tool



10-0346-COM

DP Hipster Motor with
Gasket for Hipsters



10-0372

Waist Belt Clip for
Backpack Vacuum



10-0421

Waist Belt for 6-Quart
Hipster



10-0422

Power Head Connector
Kit



10-0441-A

Replacement Brushes for
14 in. Horse Hair Brush



10-0489

White Replacement
Blades for 14 in. Squeegee
floor Tool (4 Pack)



10-1333

Black Super Motor
Brushes, Single Stage
(Set of 2)

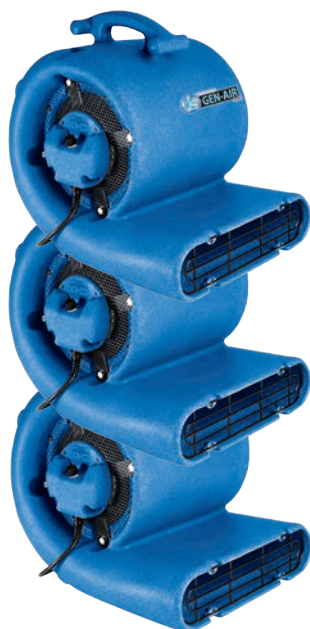


10-1333-O

Orange WHISPER Motor
Brushes, 2-Stage (Set of 2)

TIP: The 10-Quart Backpack Vacuum's static dissipating vacuum hose is angled into the lid at a 45 degree angle. This prevents bending and breaking. The hose also twists in and swivels, allowing for right- or left-handed vacuuming and prevents clogging.

GEN-AIR AIR MOVER



Stack up to 3 units for compact storage!

Handle fits conveniently into the bottom of the air mover to stack three units easily and safely.

Operate at 3 different fan speeds!

Low - 780 RPM at 1500 CFM
Med - 1000 RPM at 1900 CFM
High - 1150 RPM at 2400 CFM

Designed to operate at 3 angles!

Aim at the floor, tip back or tip up to move air and dry floors, furniture, curtains, walls and ceilings!

Warranty: Lifetime warranty on body, 1-year on motor and all electrical components.

- The 1/2 HP, 3-speed motor gives ample power for drying surfaces and moving musty air.
- Includes a 10" wide, steel fan blade and frame with a 14" chassis opening.
- Air intake and outlet screens keep airflow free from debris and protect fingers from the powerful steel fan blades.
- Designed to operate at three angles and tilts at both 45- and 90-degree angles. Aim the air stream at the floor to move air and dry carpets or tip back to dry curtains, walls and ceilings.
- Stack up to three air mover units for easier storage.
- Balanced design with molded carrying handle makes transportation easy.
- Roto-molded polyethylene body withstands the toughest working environments and resist dents, chips and cracks. It's easy to clean and always looks professional.
- Includes (1) 20-foot, 16/3-gauge safety power cord.

APPLICATIONS

Operates in three positions to allow you to dry walls, floors, ceilings and furniture with ease.

Ideal for drying furniture, drying paint, flood clean-up, moving musty air and more!

[Ask about 230 Volt Models.](#)

SPECIFICATIONS

Model: 90-0000

Motor: 1/2 HP, 115 V

3-Speed Fan: 780 RPM | 1000 RPM | 1150 RPM

Air Flow Rates: 1500 CFM | 1900 CFM | 2400 CFM

Body: Molded, High-Density Polypropylene

Weight: 32 lbs.

Dimensions: 19.2" L x 14.5" W x 19.5" H

Designed to Operate at **Three Angles**



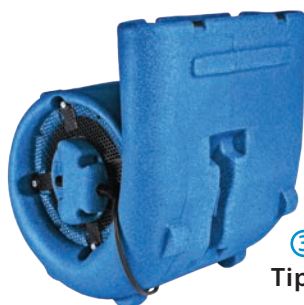
① Flat

Aim at floor to move air or dry carpets



② 45 Degrees

Tip back to dry curtains and walls



③ 90 Degrees

Tip up to dry walls and ceilings

TIP: Best air mover on the market with high CFM! Compare our 2400 CFM to the industry standard of 1700 CFM.



Manufactured with
Pride in the U.S.A.



FORCE 14 Upright Vacuum



FORCE 14

SPECIFICATIONS

Model: 60-1000

Cleaning Path: 14"

Brush Speed: 4000 RPM

Vacuum Motor: 12 amp / 1000 Watt

Brush Bar Drive Motor: 1.3 amp / 145 Watt

Furniture Guard: Yes

Filtration System: Standard Filtration
(HEPA Available)

Sound: 78 dB

UL Approved: Yes (Commercial Use)

OSHA Compliant: Yes

Unit / Shipping Weight: 19.8 lbs. / 23.8 lbs.

Warranty: 1-year.

- The modular design and construction of the FORCE 14 makes maintenance fast and easy.
- A powerful 12 amp motor produces 74.8" of vacuum lift, cleaning carpets in just one pass.
- A separate 1.3 amp motor spins the roller brush bar at 4000 RPM. This motor is designed with overload protection, a non-slip drive belt and an electronic sensor to detect brush bar blockage or belt breaks.
- The motor is dust protected with an in-line filter which makes this vacuum reliable and long-lasting.
- High-efficiency filtration collects the finest dust in a 4.75 quart, dual-wall micro-filtration bag.
- Manual, 4-position carpet height adjustment.
- When the vacuum handle is in the upright position at startup, or when vacuum tools are being used, the roller brush motor automatically turns off to protect the carpet.
- Its balanced center of gravity allows for a light handle weight and prevents tipping when using accessories.
- The telescopic wand with stretch hose extends up to 9-feet for easy cleaning of high, low and tight spaces.
- The polished stainless steel glide plate lets the Force 14 ride gently on the carpet.
- Non-skid, non-marking rear wheels make transport and stair climbing easy and do not scuff floors.
- Includes a handle-mounted tool kit: (1) upholstery brush; (1) dusting brush and (1) crevice tool.
- Includes (1) 50-foot interchangeable safety power cord with strain relief.

APPLICATIONS

Designed for everyday and commercial use to sweep carpeting. Ideal for hotels, lobbies, offices and more! With a powerful 12 amp motor producing 74.8" of vacuum lift and a wide 14" cleaning path, this vacuum allows you to sweep carpets in just one pass!

FILTERS AND BAGS



60-0006
Round Filter
Replacement



60-0007
HEPA Filter
Replacement



60-1001
FORCE 14
Replacement Paper
Bags (10 Pack)



60-1001-HEPA
FORCE 14 HEPA
Replacement Paper
Bags (10 Pack)

ABOUT OUR FLOOR MACHINES

Mercury Floor Machines has been making high-quality, durable and long-lasting floor machines for over 50 years. Our machines, known as “the original floor machine,” are heavy and add a bit of elbow grease to the cleaning process. They include polished aluminum castings that we polish ourselves in-house. We are one of the few companies left that have strong, all-metal castings that are easy to clean and look newer longer! Our “Best Warranty on the Planet” Program is a key ingredient to our distributors’ ultimate success!

FEATURES AND BENEFITS

Warranty: “Best Warranty on the Planet” – 5-years on motor, gearbox, transmission and chassis (unless otherwise noted).

- Powered by a precision-balanced, heavy-duty 1.5 HP 66-frame motor for easy operation.
- The triple-planetary high torque transmission handles the most demanding jobs.
- Strong, all-metal polished aluminum reinforced aprons. Easy to clean and look newer longer!
- All metal chassis gives added weight for a faster, longer lasting and brighter shine.
- Scrub with a brush 2” smaller than the machine size, or a pad and pad driver with riser 1” smaller than the machine size.
- Safety-enhanced interlock switch on the handle leaves both hands conveniently in control.
- Safety-enhanced, non-conductive dual triggers on the handle eliminate shock potential.
- 48” tall handle is fully adjustable and is comfortable for all operators.
- Non-marking, super-thick bumper protects walls and baseboards.
- Includes 6” non-marking wheels for easy transport.
- Includes (1) 50-foot, 14/3-gauge safety power cord. Motor plugs into cable at the base of the handle for easy maintenance.



Manufactured with
Pride in the U.S.A.

[Ask about 230 Volt Models.](#)



HERCULES Super Heavy-Duty Floor Machine

Also called a “floor buffer” and is specifically designed for cleaning, scrubbing or stripping floors.

Brush Speed: 175 RPM

Motor Type: 1.5 HP A/C, 2 Capacitors, 15 Amp

Optional: Unicorn Weight Kit (UWK) and Solution Tank (SST-4)

Order brushes and pad drivers separately.

The floor machine, which also may be more traditionally referred to as a “Floor Buffer,” is specifically designed for cleaning, scrubbing or stripping floors.

Model	Apron Size	Rotary Brush	Rotary Pad Driver with Riser	Weight
H-13E	13 in.	11 in.	12 in.	103 lbs.
H-15E	15 in.	13 in.	14 in.	104 lbs.
H-17E	17 in.	15 in.	16 in.	106 lbs.
H-19E	19 in.	17 in.	18 in.	107 lbs.
H-20E	20 in.	18 in.	19 in.	108 lbs.
H-21E	21 in.	18 in.	19 in.	108 lbs.

Optional Short Bristle Pad Drivers

1305 12 in. **1505** 14 in. **1705** 16 in. **1905** 18 in. **2105** 19 in.

TIP: We make it easy for the end-user to self diagnose issues. Our motor plugs into the cable at the base of handle. If you unplug the short pigtail, plug it into the wall and if it doesn't work, then the issue is in the handle, not the motor!

TIP: Our motors have dual capacitors that work as start and run capacitors. Our machines also include triple-planetary high torque transmissions. Both these features extend the life of the motor and the transmission!



Manufactured with
Pride in the U.S.A.

HERCULES SEALED SANDER with Sealed Bearing Motor

For Dusty Wood, Stone and Concrete. Sealed motor and hospital compatible!

Motor Type: 1.5 HP A/C, 2 Capacitors, 15 Amp

Brush Speed: 175 RPM

Order brushes and pad drivers separately.

Optional Heavy-Duty Sanding Paper Driver

1626 16 in. Sand Paper Driver

Model	Apron Size	Rotary Brush	Rotary Pad Driver with Riser	Weight
H-17S	17 in.	15 in.	16 in.	106 lbs.
H-20S	20 in.	18 in.	20 in.	108 lbs.

Accessories

PVKIS	Dust Replacement Skirt for H-17S, for Wood Floor Sanding
PVKISM	Dust Replacement Skirt for H-20S, for Wood Floor Sanding
12TV027	Sanding Vacuum Kit

LO-BOY Super Heavy-Duty, Ultra Quiet Floor Machine

Used for spray buffing, scrubbing, stripping, shampooing and bonnet cleaning.

Motor Type: 1.5 HP A/C, 2 Capacitors, 15 Amp

Brush Speed: 175 RPM

Optional: Unicorn Weight Kit (UWK) and Solution Tank (SST-4)

Order brushes and pad drivers separately.

Model	Apron Size	Rotary Brush	Rotary Pad Driver with Riser	Weight
L-15E	15 in.	13 in.	14 in.	96 lbs.
L-17E	17 in.	15 in.	16 in.	99 lbs.
L-19E	19 in.	17 in.	18 in.	102 lbs.
L-20E	20 in.	18 in.	19 in.	103 lbs.
L-21E	21 in.	18 in.	19 in.	105 lbs.

Optional Short Bristle Pad Drivers

1505 14 in.	1705 16 in.	1905 18 in.	2105 19 in.
--------------------	--------------------	--------------------	--------------------

CLEANMASTER Dual Speed Floor Machine

Labor-saving dual speed, specifically designed for cleaning, scrubbing or stripping floors.

Brush Speed: 175/300 RPM Dual Speed

Motor Type: 1.5 HP, 66-Frame D/C Rectified Motor, 13-15 Amps

Order brushes and pad drivers separately.

Model	Apron Size	Rotary Brush	Rotary Pad Driver with Riser	Weight
TS-17	17 in.	15 in.	16 in.	102 lbs.
TS-19	19 in.	17 in.	18 in.	103 lbs.
TS-21	21 in.	19 in.	20 in.	104 lbs.

Optional High-Speed Cushioned Pad Drivers

1709 16 in.	1909 18 in.	2109 20 in.
--------------------	--------------------	--------------------

LOW BOY LB9000 Orbiting Floor Machine

Orbital sanding at 1725 OPM with no torque gouging, swirling or vibrations.

Powerful induction motor is totally enclosed allowing a long life for brushes and commutator.

A 16" sanding screen lays under the pad driver fit with a standard 16" scrubbing pad.

Collect sanding dust with a Backpack Vacuum by adding an optional Sanding Dust Kit.

Free-floating, chromed steel handle includes an easy kick release and an automatic locking system.

Order pad drivers and 16" sanding screens separately.

Model	Apron Size	Brush Speed	Motor	Weight
LB-9000	19 in.	1725 OPM	3/4 HP	106 lbs.

Pad Drivers

1914	Micro-Hook Style
1915	Bristle-Style

Optional Sanding Vacuum Kit
12TV027 Includes hoses, cuffs and T-Mount

16 in. Sanding Screens

SO6016	60 Grit
SO8016	80 Grit
SO1016	100 Grit
SO1516	150 Grit
SO1816	180 Grit

Model L-20E is known as our **Schoolmaster** and is designed for schools with a 20 in. apron.

Shown with **12TV027** Optional Sanding Vacuum Kit





BOSS Heavy-Duty Floor Machine with Interchangeable Aprons

Build a fleet of machines with up to five aprons. Available in single or dual speeds.

Five interchangeable aprons with one base machine gives you a fleet of floor care machines for a range of tasks in any size facility. Aprons mount with three easy-to-change thumb screws.

May traditionally be referred to as a "Floor Buffer" and is specifically designed for cleaning, scrubbing or stripping floors (stone, carpet, tile or wood).

Optional: Unicorn Weight Kit (UWK) and Solution Tank (SST-4)

A complete order includes (1) base unit with (1) or more aprons.

Model	Brush Speed	Motor	Weight
BOSS-1	175 RPM	1.5 HP A/C	90 - 107 lbs. Depending on Apron Selection
BOSS-2	175/ 300 RPM	1.5 HP D/C	
Aprons with Bumpers		Pad Drivers w/ Riser and 92 Clutch Plate)	
A-163-1	13 in. (3 lbs.)	1305	12 in. Short Bristle
A-167-1	15 in. (4 lbs.)	1505	14 in. Short Bristle
A-169-1	17 in. (5 lbs.)	1705	16 in. Short Bristle
A-171-1	19 in. (6 lbs.)	1905	18 in. Short Bristle
A-172-1	21 in. (7 lbs.)	2105	19 in. Short Bristle

Brush Drive: Universal Clutch Plate

BOSS MULTI-TASKER Floor Machine with Solution Tank and Weight Kit

Maintain stone, carpet, tile or wood floors. Available in single or dual speeds.

One of our most popular floor machines. It is fully loaded with all the accessories and features needed for complete floor care.

Includes Unicorn Weight Kit: add up to 50 extra pounds of pressure for a comprehensive stone and marble floor restoration program.

Includes 4-Gallon Solution Tank: for productive wet cleaning.

Brush Drive: Universal Clutch Plate

Order brushes separately.

Model	Brush Speed	Motor	Weight
BMT-175	175 RPM	1.5 HP A/C	175 lbs. with all Accessories
BMT-175/300	175/ 300 RPM	1.5 HP D/C	

Includes Three Interchangeable Aprons

13", 17" and 21", non-marking aprons with full wrap bumpers. Aprons mount with three easy-to-change thumb screws.

Includes Pad Drivers

12", 16" and 20" pad drivers with B/92 style clutch plate (for all other brushes, order 11 in., 15 in. and 19 in. Pad Drivers with B/92 Style Clutch Plate)

ONE-TOUCH DRY SCRUB Floor Machine

Chemical-free stripping, used for refinishing wood floors and for scrubbing and stripping floors.

Machine Warranty: 1-year (including motor, handle assembly and all critical wear items)

Backpack Warranty: Lifetime on roto-molded body, 5-years on motor and 1-year on all electrical components.

Heavy-duty, high quality components prepare floors to be refinished in half the time compared to the conventional stripping process. Cleans edges and corners in every room. No stripper run-off and no ruined floors under doors. No side torque and operates in any direction.

Remove grease on kitchen floors! Use with an Astroturf pad.

Model	Orbital Speed	Motor	Cleaning Pad Size	Weight
DS-18	1725 RPM	1 HP	12 in. x 18 in.	120 lbs.

Includes: 6-Quart Raven Backpack Vacuum

Scrubbing and Filler Pads Required with use of the Machine – Sold Separately

42071218	Maroon Stripping Pad (10 per Case)	40441218	Filler Pads (5 per Case)
-----------------	------------------------------------	-----------------	--------------------------

Oscillating plate completely enclosed by dust skirt and when used in conjunction with the Raven 6-Quart Backpack Vacuum, captures 95% plus of all airborne particles. Light tacking is all that is needed to prepare floor for a new coat of finish!



Manufactured with
Pride in the U.S.A.



ABOUT OUR BURNISHERS

Mercury Floor Machines makes ultra high-speed burnishers in three motor speeds: 1170, 1500 and 2000 RPM. Burnishers operate at a higher speed than slower buffers and provide a quick and economical way for a business to have a clean appearance. They are able to cover large spans of area compared to buffers. This makes burnishers useful for cleaning large surfaces in businesses or even supermarkets.

FEATURES AND BENEFITS

Warranty: "Best Warranty on the Planet" – 5-years on motor and chassis.

- Burnishing power with 1.5 HP, 15 Amp, D/C rectified motor that eliminates burn-outs, low voltage and startup torque problems.
- Reliable 1170, 1500 or 2000 RPM motor speeds.
- 19", 20" or 21" aprons with non-marking, full wrap bumpers protect walls and baseboards.
- Low profile drive apron easily reaches under counter coves and beds.
- Balanced chassis design provides precise pad pressure. Includes flexible pad holder with threaded pad-centering device that conforms to floor irregularities, delivering an even shine and gloss.
- All metal chassis gives added weight for a faster, longer lasting and brighter shine.
- Designed with safety in mind. The interlock switch leaves both hands conveniently in control. Safety enhanced, non-conductive dual triggers eliminate shock potential.
- 6" non-marking operating wheels and separate 4" transport wheels prevent tracking of contaminants.
- Fully adjustable 48" handle is comfortable for all operators.
- Includes (1) 50-foot, 14/3-gauge safety power cord. The motor plugs into the cable at the handle base for easy maintenance.

[Ask about 230 Volt Models.](#)

Ultra D.C. Ultra High-Speed Burnishers

Also called a "floor polisher" and is specifically designed for high-speed polishing.

Brush Speed: 1170, 1500 or 2000 RPM

Apron Sizes: 19 in., 20 in. or 21 in.

2000 RPM models include a front caster assembly. Front leveling provides precise pad pressure for even shine and gloss.

Model	Apron Size	RPM	Weight
DC-19-1170	19 in.	1170	84 lbs.
DC-20-1170	20 in.	1170	85 lbs.
DC-21-1170	21 in.	1170	86 lbs.
DC-19-1500	19 in.	1500	84 lbs.
DC-20-1500	20 in.	1500	85 lbs.
DC-21-1500	21 in.	1500	86 lbs.
DC-19-2000	19 in.	2000	87 lbs.
DC-20-2000	20 in.	2000	88 lbs.
DC-21-2000	21 in.	2000	89 lbs.

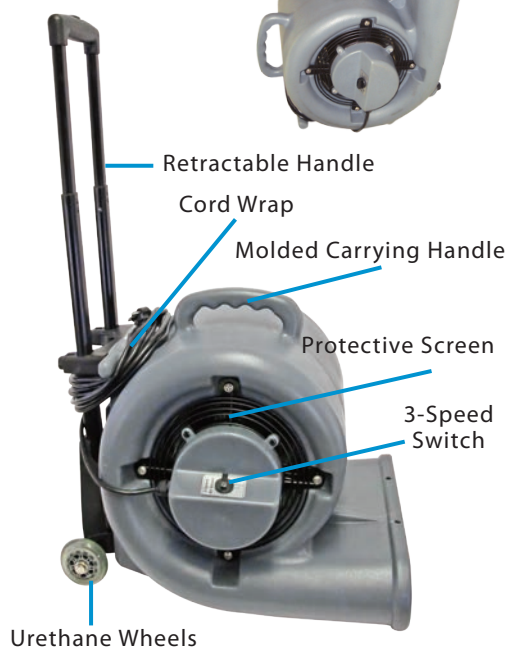
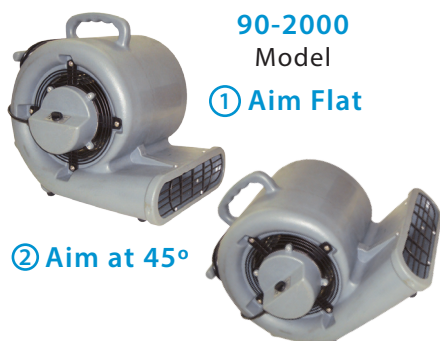


Manufactured with
Pride in the U.S.A.



CREATE
YOUR
OWN
BRAND

AIR MOVERS AND VACUUM EQUIPMENT



90-2000WH Model

Mercury Floor Machines' air movers are ideal for drying carpets, furniture and paint, flood clean-up, moving musty air and more. The roto-molded polyethylene body withstands the toughest working environments and resists dents, chips and cracks. It's easy to clean and always looks professional.

FEATURES AND BENEFITS

Warranty: 10-years on roto-molded body, 1-year on motor and all electrical components.

- The 1/2 HP, 3-speed motor gives ample power for drying surfaces and moving musty air.
- Includes a 9.5" wide, steel fan blade.
- Air intake and outlet screens keep airflow free from debris and protect fingers from the powerful steel fan blades.
- Includes a top-of-the-line retractable handle for single-handed use and maneuverability.
- Stack up to three air mover units for easier storage.
- Balanced design with molded carrying handle, cord wrap and double ball-bearing wheels make transportation easy.
- Includes (1) 20-foot, 16/3-gauge safety power cord.



CORSAIR (90-2000) High-Roller (90-2000WH)

Stack up to three air movers for easier storage!

Designed to operate in three positions and tilts at both 45- and 90-degree angles. Aim the air stream at the floor to move air and dry carpets or tip back to dry curtains, walls and ceilings.

Model No. 90-2000WH includes retractable handle.

Model	Weight	Dimensions		
90-2000	31 lbs.	19.2" L x 14.5" W x 19.5" H		
90-2000WH	33 lbs.			
3-Speed Fan	780 RPM	950 RPM	1100 RPM	
Air Flow Rates	1060 CFM	1360 CFM	1500 CFM	

AIR PRINGLE Low-Profile Air Mover

GFCI and Daisy Chain Capabilities – connect five (5) units from a single outlet!

Warranty: 10-year warranty on body, 1-year on motor and all electrical components.

- The 1/4 HP, 2-speed motor gives ample power for drying surfaces and moving musty air. A two-speed switch allows for low and high airflow.
- The new Low Profile machine is a radial air mover with outstanding performance, 1100 CFM and 2.1 amps, as well as many superior features, including its exceptional ergonomics and compact size.
- Designed to operate in three (3) positions: flat, raised on legs or vertical to move air and dry carpets, curtains or walls.
- GFCI and daisy chain capabilities allow five (5) units to be connected from a single outlet (includes circuit breaker and two female outlets).
- Nested stacking allows for easier storage – stack up to six (6) units!
- Includes a 12.4" wide, steel fan blade and frame with a 16" chassis opening. (1) 25-foot, 14/3-gauge safety power cord.



90-2000-LP Model



VACUUM EQUIPMENT

ACE 10-Quart Backpack Vacuum

Worn on the back to allow for easy and quick vacuuming while walking. Ideal for hallways!

Warranty: 5-year warranty on body, 2-years on motor, 90-days on tools.

- Fastest soil pick-up with a 1.5 HP, 2-stage, 1122 Watt motor and 120 CFM airflow, making the ACE significantly more proficient than traditional uprights.
- Collects the most soils, leaving exhaust air cleaner with a disposable, heavy-duty paper micro-bag mounted inside a washable cloth shakeout bag.
- Lightweight ergonomic design, with a cushioned back-pad that fits the curve of any operator's back. The comfortable shoulder and waist belt design reduces fatigue, making work easier.
- Two lever-style latches lock the lid to the body and a twist top lid with static-dissipating vacuum hose and swivel cuff allow for left- and right-handed vacuuming.
- Includes easy-to-reach On/Off power switch and (1) 50-foot, 16/3-gauge safety power cord.
- Includes 5-piece tool kit: 5" upholstery tool, 3" round dust brush, 14" scalloped floor tool, 17" crevice tool and 56" 2-piece wand.



88-8888
Model



Manufactured with
Pride in the U.S.A.



STORM 20-Gallon Wet / Dry Vacs

Used for both wet and dry vacuuming. Ideal for flood or spill clean-up.

Warranty: 1-year warranty on motors, 90-days on tools and accessories.

- Powerful dual 1.335 HP (total 2.67 HP) / 2000 Watt vacuum motors with separate switches for each motor.
- High 225 CFM airflow and 78" water lift.
- 20-gallon tank capacity (15-gallon wet). Select chromed steel or super-durable poly tank construction.
- Weighing only 63 lbs. (empty), this lightweight wet/dry vac is steady on the floor and makes transport easy.
- Cloth vacuum filter controls dust and protects motors. Easy to remove and wash.
- Includes a 10-foot vacuum hose, strong chromed-plated steel "S" wand and durable vacuum head.
- The 1.5" vacuum hose locks securely to the tank port.
- Includes a 5-piece tool kit: crevice tool, dust brush, squeegee tool, scalloped bristle floor tool and 2-piece wand.
- Includes (1) 50-foot, 16/3-gauge safety power cord.

Ask about 230 Volt Models.



Optional Squeegee Assembly

Step-down foot pedal to raise and lower front mounted squeegee. Attaches to machine cart.

Part No. WVS-20B

WVP-20
Poly Tank



BF5-21-SET

5-Piece Tool Kit with
Wand and Hoses for
Wet/Dry Vacs



Crevice Tool



Round Dust
Brush



Squeegee Tool



Scalloped Bristle Floor
Tool



2-Piece Wand



STAND OUT FROM THE COMPETITION

with our Private Label Program

BUILD YOUR THE ULTIMATE PRIVATE LABEL PROGRAM

We make it easy for you to combine your company's brand recognition, reputation and business skills with our quality products!



PLACE YOUR LOGO ON OUR PRODUCTS

We partner with you to develop custom labels and graphics.

CHOOSE YOUR MACHINE'S COLOR SCHEME

(6) bumper colors available and we can mold any colored machine!

CUSTOMIZE YOUR MARKETING MATERIALS

Customized product sell sheets and operating manuals included.

NO MINIMAL START-UP ORDERS

No minimum quantity of machines required to purchase!

